

# Teacher Preview Giant Cutout Instructions

## Supplies\*:

- Duct tape
- Insulation board with a thickness of 3/4" or more
- Yellow paint
- Lime green paint
- White paint
- Magenta paint
- Black paint
- Green marker
- Masking tape



## Directions:

1. Use the stencil provided on page 3 to project onto the insulation foam. Project the cutout to be roughly about 7' tall. See **Figure 1**.
2. Cut out both figures, and set the monster's glasses aside. Your cutout should look like **Figure 2**.
3. Paint the monster's body lime green, as shown in **Figure 3**.
4. Paint the monster's mouth black, as shown in **Figure 4**.

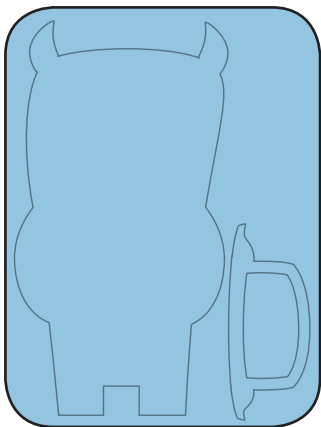


Figure 1

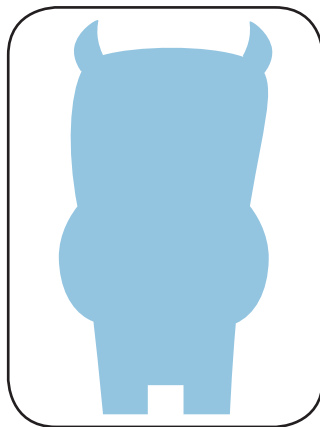


Figure 2

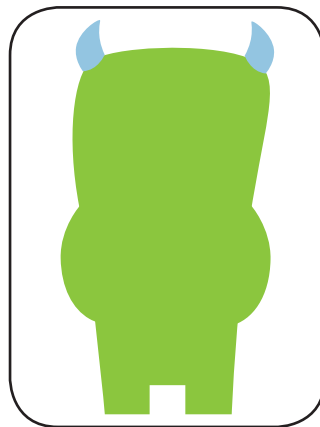


Figure 3

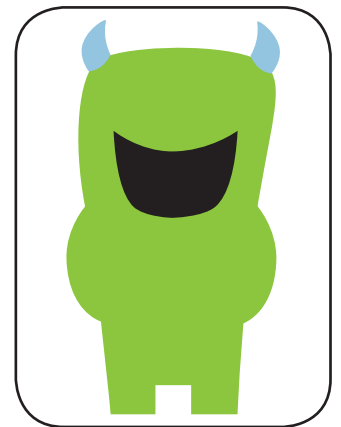


Figure 4

\*Remember, these are only suggestions. This should be fun and creative, so use supplies you have on hand for substitutions.

5. Paint the monster's eye and teeth with the white paint, as shown in **Figure 5**.
6. Paint the monster's pupil magenta, as shown in **Figure 6**.
7. Paint the monster's nails and horns yellow, as shown in **Figure 7**.
8. Draw the monster's details with the green marker, as shown in **Figure 8**.

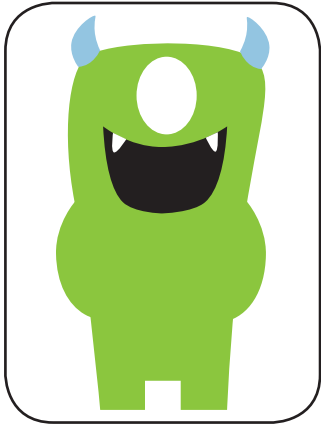


Figure 5

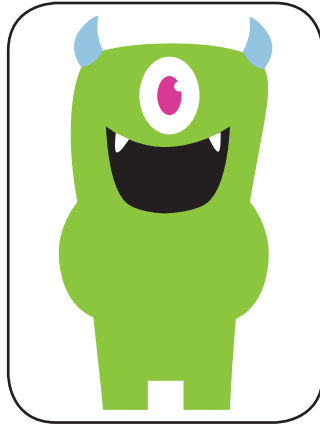


Figure 6

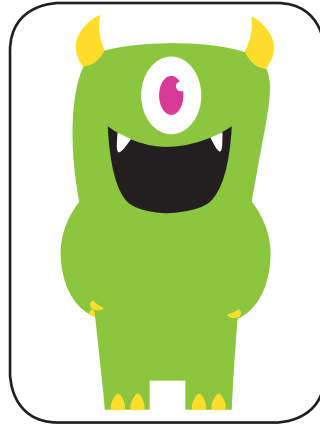


Figure 7

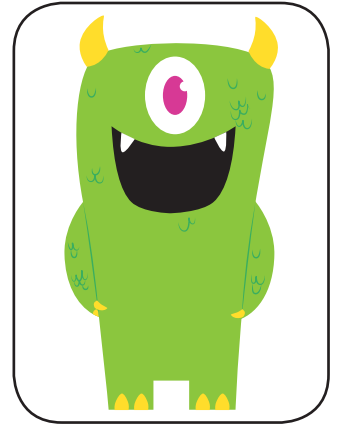


Figure 8

9. Paint the glasses with a paint mixed from black and white, so that it's a dark gray, as shown in **Figure 9**.
10. Attach the glasses to the finished monster using tape, as shown in **Figure 10**.

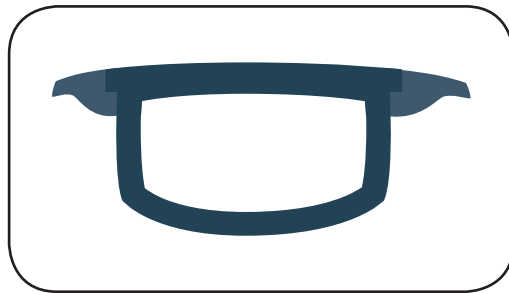


Figure 9

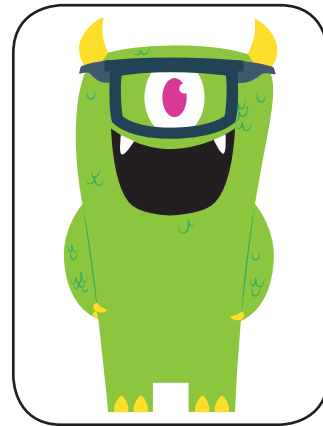
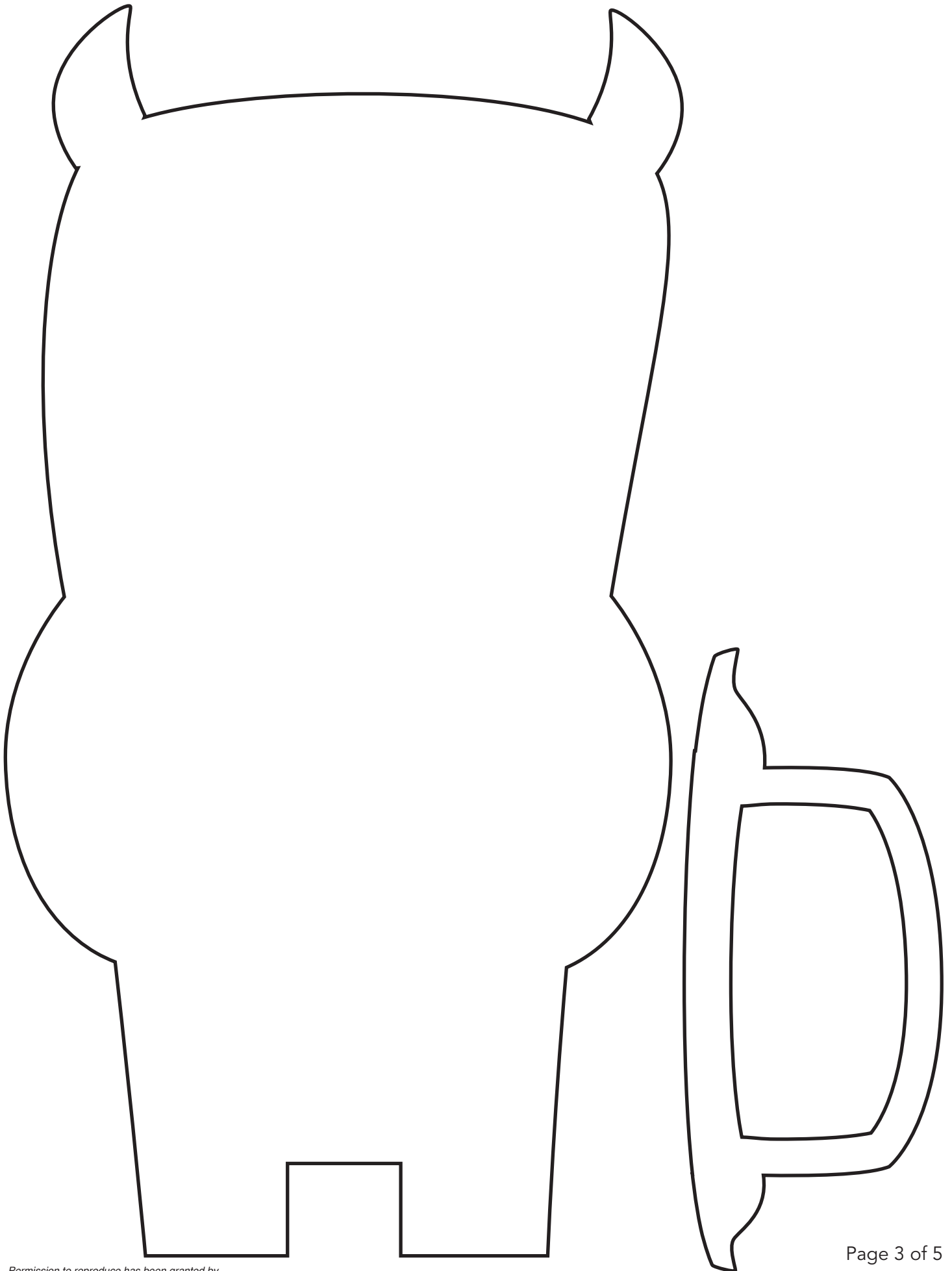


Figure 10

11. Print out the text "Welcome to Our Teacher Preview." Cut out and glue onto the monster's mouth.



# WELCOME TO OUR TOWN

FACE HERE  
DRAWN

